

# Plant and Animal Heat Strategy Matching Worksheet

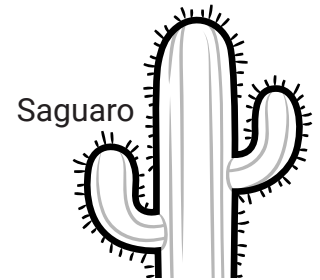
On this page is a list of plants and animals and text about ways they stay cool in the heat. Draw a line from the organism to the matching text. Good luck!



Dog

Has extra long roots to get water from deep underground.

Has tiny leaves to help reduce loss of water.



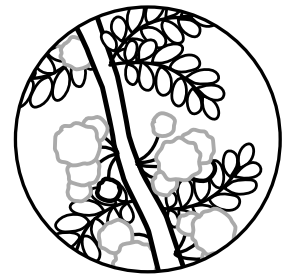
Saguaro



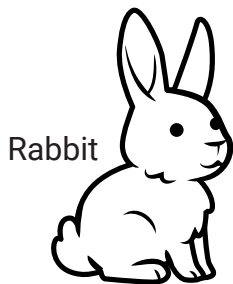
Palo verde

Has pleats (folds) that help with water storage and create shade.

Helps heat leave the body by moving air quickly in and out through their mouth.



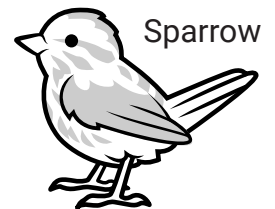
Acacia



Rabbit

When there's no water, they dry out and stop growing until they get water again.

Has long thin ears with a big surface area to get rid of heat.

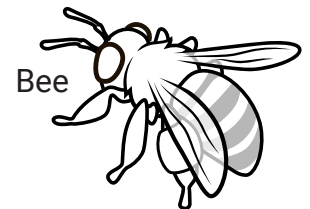


Sparrow



Aloe

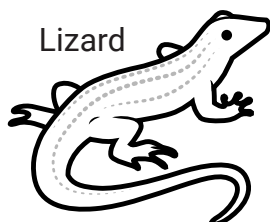
They align their body with the sun so less direct sunlight hits them.



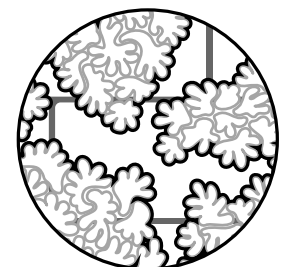
Bee

They fan their wings to help hot air leave their hive.

Has shallow roots that grow sideways to quickly collect water when it rains.



Lizard

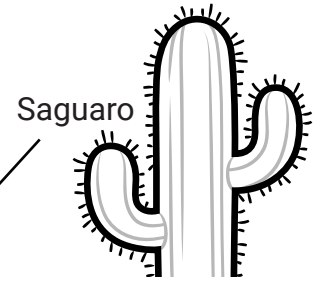


Lichen

# Plant and Animal Heat Strategy Matching Worksheet Key



Has extra long roots to get water from deep underground.

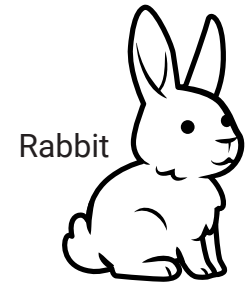


Has tiny leaves to help reduce loss of water.

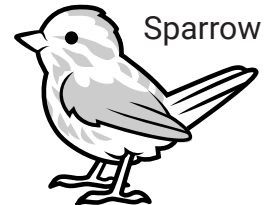
Has pleats (folds) that help with water storage and create shade.



Helps heat leave the body by moving air quickly in and out through their mouth.



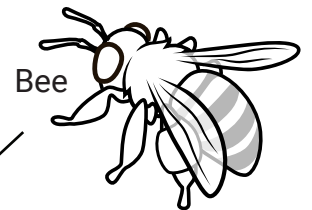
When there's no water, they dry out and stop growing until they get water again.



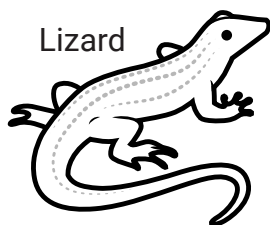
Has long thin ears with a big surface area to get rid of heat.



They align their body with the sun so less direct sunlight hits them.



They fan their wings to help hot air leave their hive.



Has shallow roots that grow sideways to quickly collect water when it rains.

